

3.3.2 STUDENT EXCHANGE PROGRAM AMONG STUDY PROGRAMS OUTSIDE UNP

3.3.2.1 UNDERSTANDING

One of UNP MBKM policy implementations is the exchange of students between Study Program outside the UNP. Student exchange is an activity for students to take classes or semesters at foreign and domestic universities online or offline, based on a cooperation agreement that has been made between universities or study programs. Student exchanges are intended to shape students' attitudes as stated in Regulation of Minister of Education and Culture Number 3 of 2020, namely; respecting cultural diversity, religious views, and beliefs; other people's original opinions or findings; and work together, have social sensitivity and concern for society and the environment.

The objectives of student exchanges include:

- 1) Studying across campuses (domestic and abroad), living together with family at the destination campus, students' insight into *Bhinneka Tunggal Ika* in real life will be growing. Intercultural and ethnic brotherhood will be stronger.
- 2) Building student friendships between regions, ethnicities, and cultures, thereby increasing the spirit of national unity and integrity.
- 3) Organizing the transfer of knowledge to cover educational disparities between domestic universities and the condition of higher education in the country and abroad.

3.3.2.2 PROCEDURE

Implementing student exchanges between study programs outside of UNP involves various parties, including UNP, Partners University, Study Programs, Academic Advisory Lecturers, and Students.

Universitas Negeri Padang

- 1) Collaborate with domestic and foreign universities or scientific consortiums to organize credit transfers those students can participate in.
- 2) Allocate quotas for *in-bound* students and students who do *outbound* (reciprocal).
- 3) Ensuring the implementation of student learning programs and off-campus student activities under the contract agreement.
- 4) If necessary, organize a selection of student exchanges that meet the principle of fairness for students.
- 5) Monitor the implementation of student exchanges.
- 6) Assess and evaluate the results of student exchanges to then convert or recognize the credits taken by students.
- 7) Report the results of learning activities to the Directorate General of Higher Education through PDPT.

Partner Universities

- 1) Approve the document of cooperation (MoU/PKS) with the university/faculty/study program.
- 2) Ensure student learning programs and off-campus student activities under the cooperation document (MoU/PKS).
- 3) Carry supervision out regularly of the student exchange process.

Study Program

- 1) Develop a curriculum that facilitates students to take courses in other study programs at different universities.
- 2) Set the number of credits that can be taken from other study programs at different universities.
- 3) Determine the courses that students can take from other studies outside of UNP
- 4) Set the quota of *inbound* and *outbound* programs students participating in the MBKM program for student exchange between study programs outside of PT.
- 5) Make agreements with partner universities, including the learning process, semester credit recognition, and assessment, as well as financing schemes.

Academic Advisory Lecturer (PA)

- 1) Guiding students in determining the PT and study program courses enrich the uniqueness or learning support vehicle to optimize CPL.
- 2) Approve the proposed courses of students.
- 3) Monitoring the progress of student learning activities.

Students

- 1) Current Students Enrolled in PDPT.
- 2) Obtain Academic Advisor (Lecturer) approval.
- 3) Participate in learning activity programs in other study programs at different universities under the provisions of academic guidelines owned by the University.
- 4) Registered as a course participant in the designated study program at another University.

The schematic flow of the student exchange activity process can be seen in the following figure:

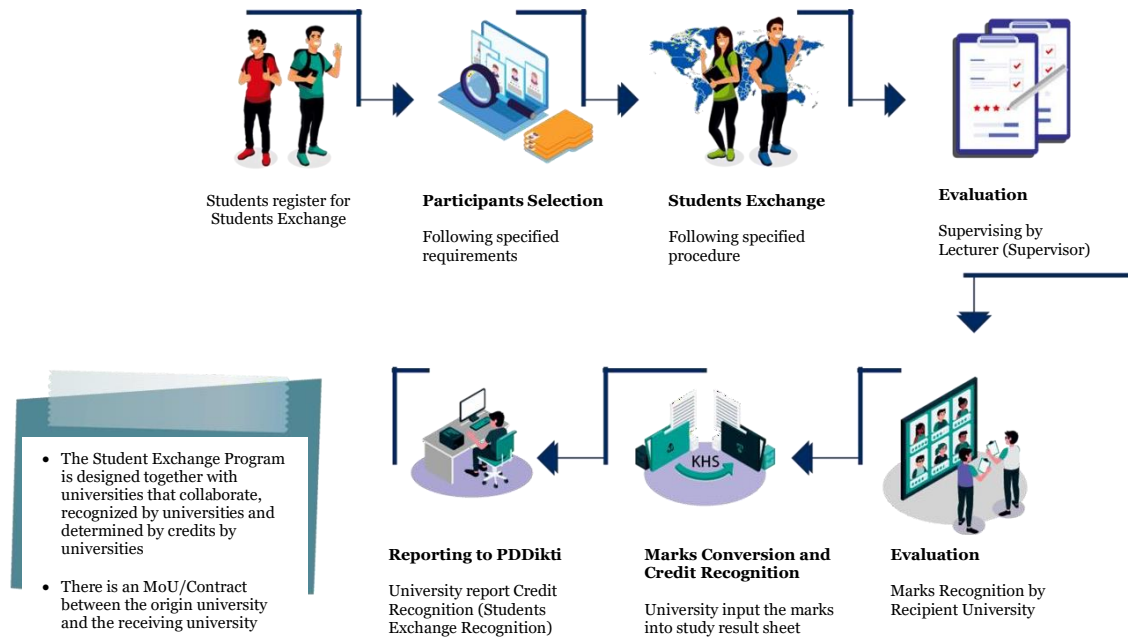


Figure 3.3. The Mechanism of the Student Exchange Process between Universities

3.3.2.3 CONVERSION/RECOGNITION

Conversion or recognition is mutually agreed upon between UNP/Faculty/Study Program with partner University/Faculty/Study Program and outlined in a cooperation document (MoU/PKS). The courses taken must meet the conditions set by the original study program to graduate (e.g., complete the primary curriculum, meet general lecture requirements, meet elective needs, etc.).

Recognition of courses taken by students at other universities both at home and abroad is under the following provisions:

- 1) For courses that have the same level of lecture material $> 70\%$, it is recognized with the courses in the relevant study program and will be listed on the student's transcript
- 2) For courses with a similarity level of lecture material $< 70\%$, it is recognized by including the activities in the Certificate of Companion Diploma (SKPI).
- 3) If some courses/credits have not been fulfilled by the learning activities outside the study program, the study program prepares online additional alternative materials.